



Leggi queste istruzioni prima di iniziare.

Assicurati che l'opzione di scala della stampa sia impostata al 100%.

Assicurati di stampare da un solo lato del foglio.

Attenzione: si raccomanda la supervisione di un adulto!

Ti occorreranno...

Per tagliare: forbici o taglierino affilato

Per incollare: colla universale forte o colla da hobby a presa rapida

Una superficie pulita e resistente ai tagli, ad esempio un tappetino da taglio


Carta consigliata

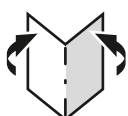
160 g/mq - 200 g/mq

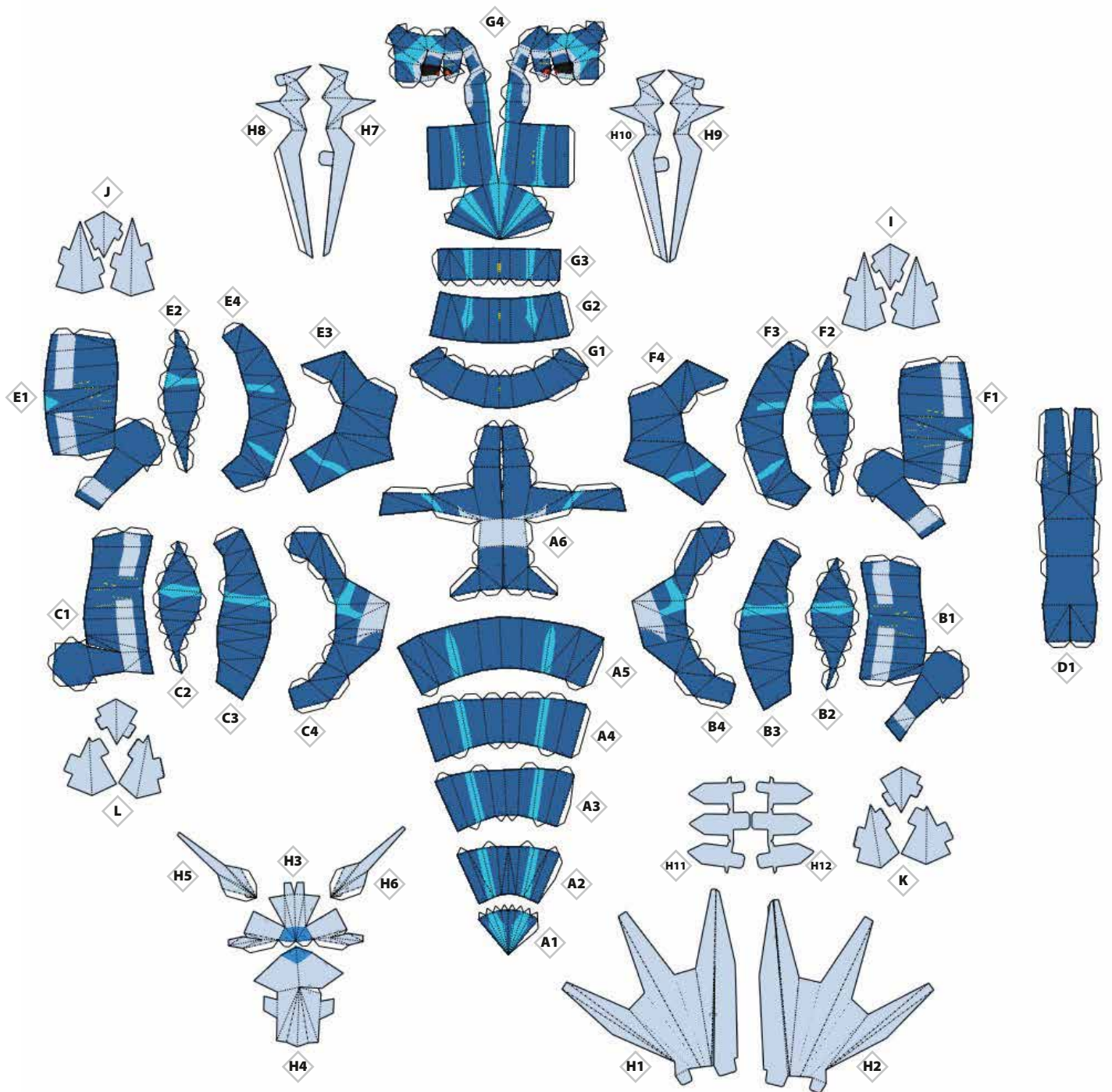
Fai attenzione mentre assembli il tuo modellino di carta di Dialga, ma soprattutto **divertiti!**

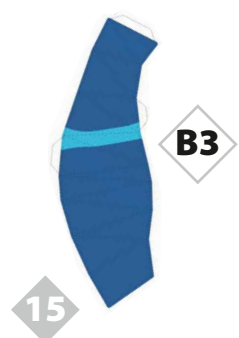
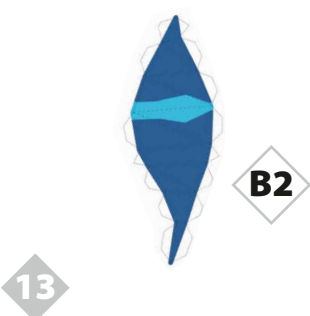
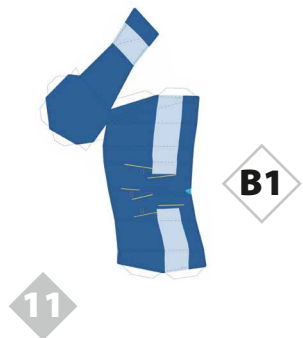
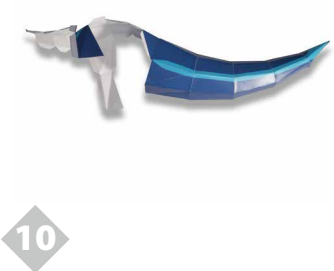
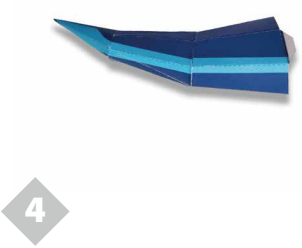
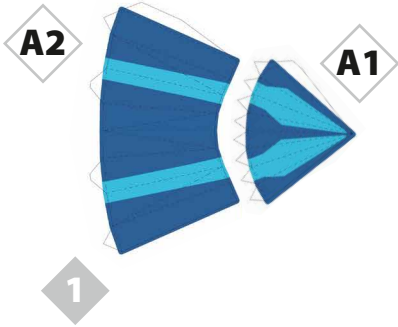
 Incisione a fessura

 Taglio

 Piegatura interna

 Piegatura esterna







16



B4

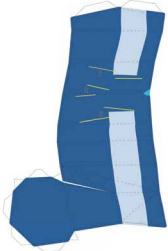
17



18



19



C1

20



21



C2

22



23



C3

24



25



C4

26



27



28



D1

29

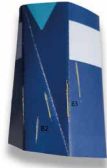


30



E1

31



32



E2

33



34



E3

35



36



E4

37



38



39



F1

40



41



F2

42



43



F3

44



45



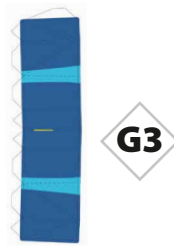
46



49



51



53



55



57



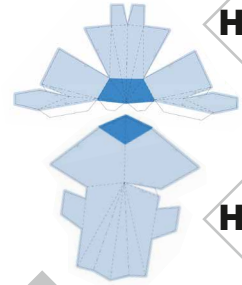
60



61



62



H3

H4

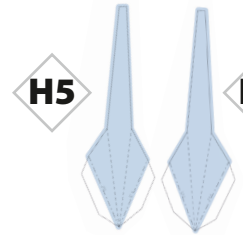
63



64



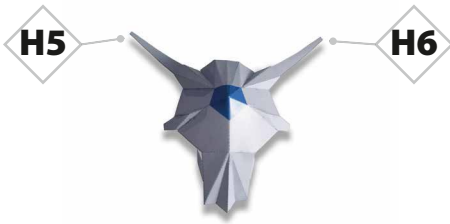
65



H5

H6

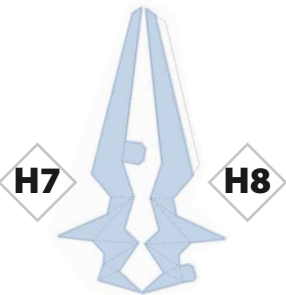
66



H5

H6

67



H7

H8

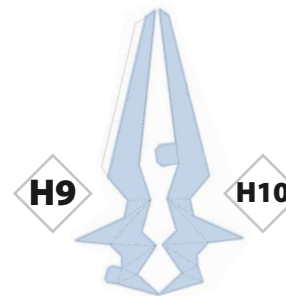
68



69



70



H9

H10

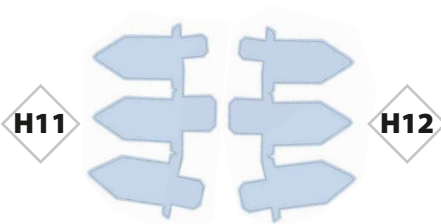
71



72



73



H11

H12

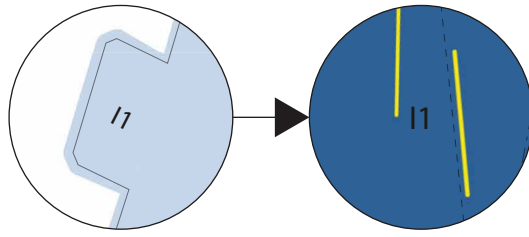
74



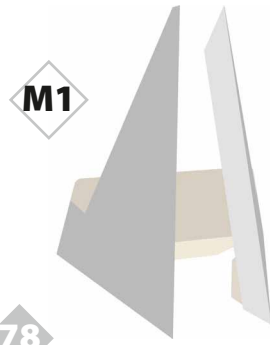
75



76



77



78

