



Avant de commencer, merci de lire les instructions suivantes.

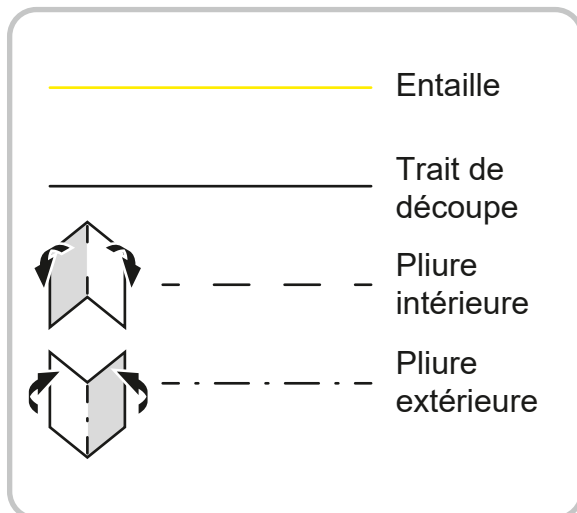
Vérifiez que l'échelle est réglée sur 100 % dans les paramètres de votre imprimante. Imprimez sur le recto uniquement.

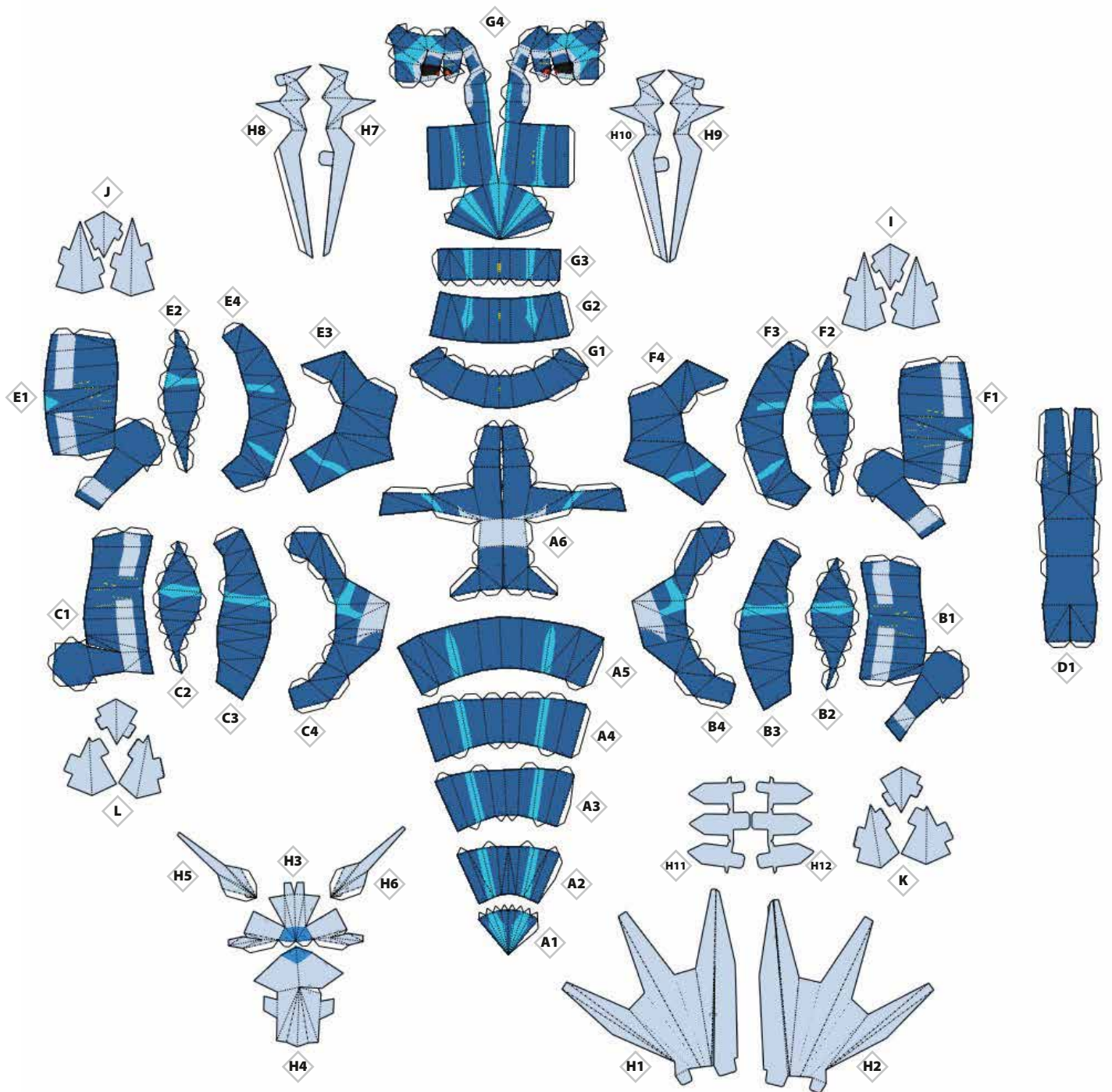
Avertissement : la supervision d'un adulte est vivement conseillée !

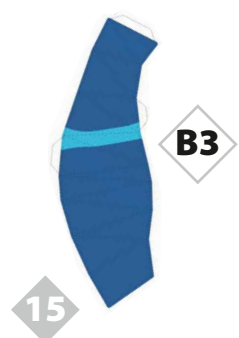
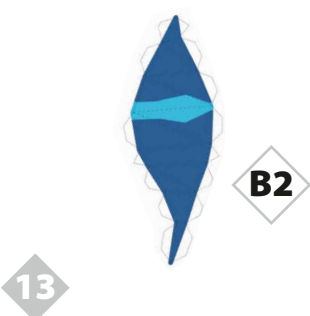
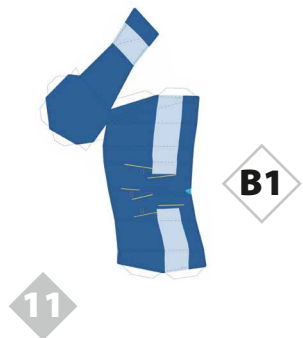
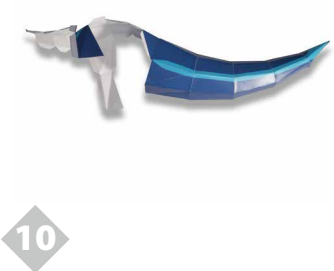
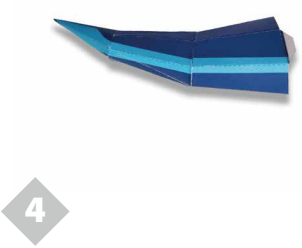
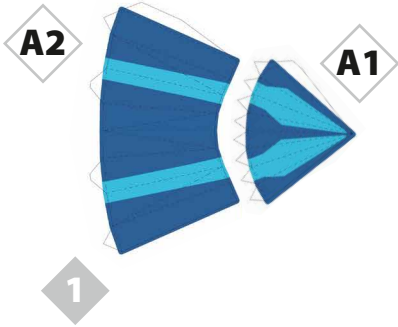
Matériel requis :

Pour découper : des ciseaux ou un cutter
Pour coller : de la colle forte multi-usage ou de la colle transparente à prise rapide
Une surface propre sur laquelle découper, comme un tapis de découpe
Grammage papier :
160 g/m² à 200 g/m²

Faites attention à vous lors de la fabrication de ce modèle papier Dialga, et **amusez-vous bien !**









16



B4

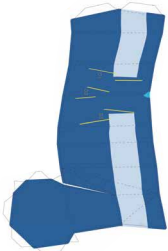
17



18



19



C1

20



21



C2

22



23



C3

24



25



C4

26



27



28



D1

29

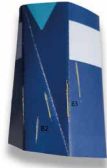


30



E1

31



32



E2

33



34



E3

35



36



E4

37



38



39



F1

40



41



F2

42



43



F3

44



45



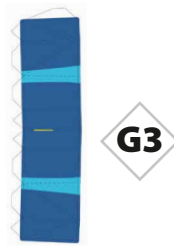
46



49



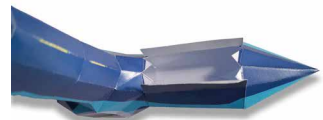
51



53



55



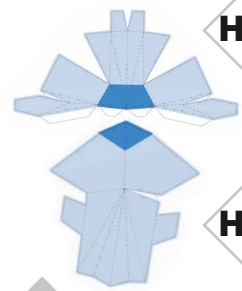
60



61



62



H3

H4

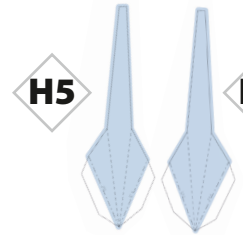
63



64



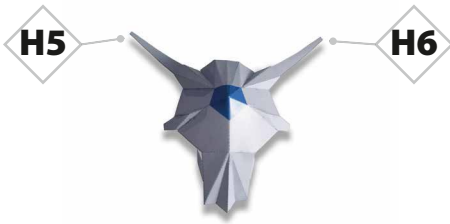
65



H5

H6

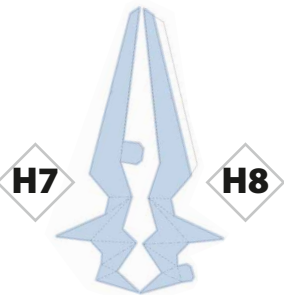
66



H5

H6

67



H7

H8

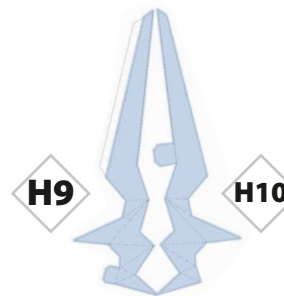
68



69



70



H9

H10

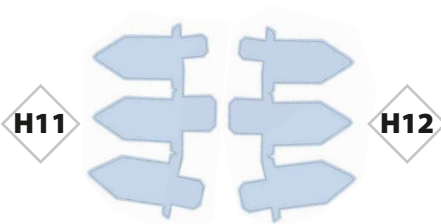
71



72



73



H11

H12

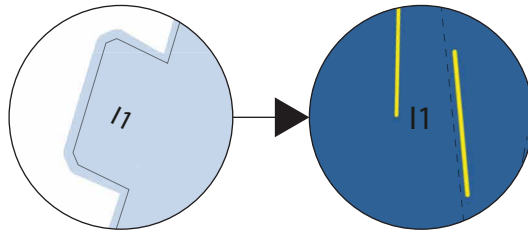
74



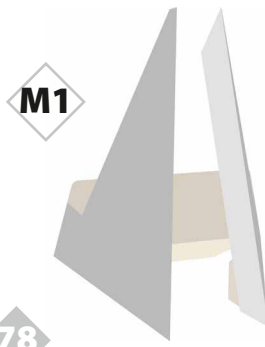
75



76



77



78

