



Lee estas instrucciones antes de empezar.

Asegúrate de que la configuración de la impresora esté a escala del 100 %.

Imprime el modelo solo por una cara del papel.

Aviso: Se recomienda la supervisión de un adulto.

Necesitarás:

Unas tijeras o cúter

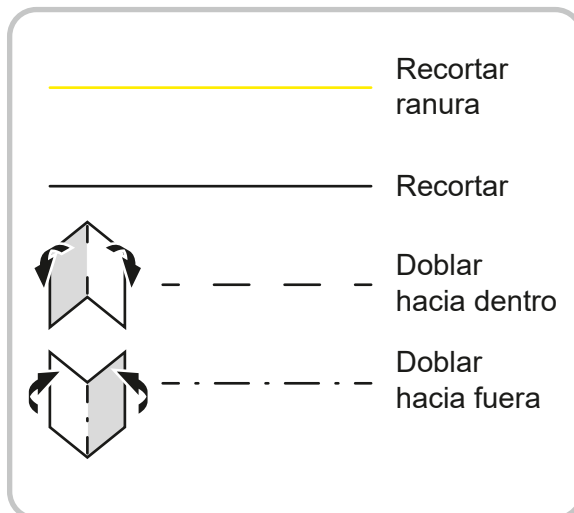
Pegamento multiusos fuerte o cola instantánea

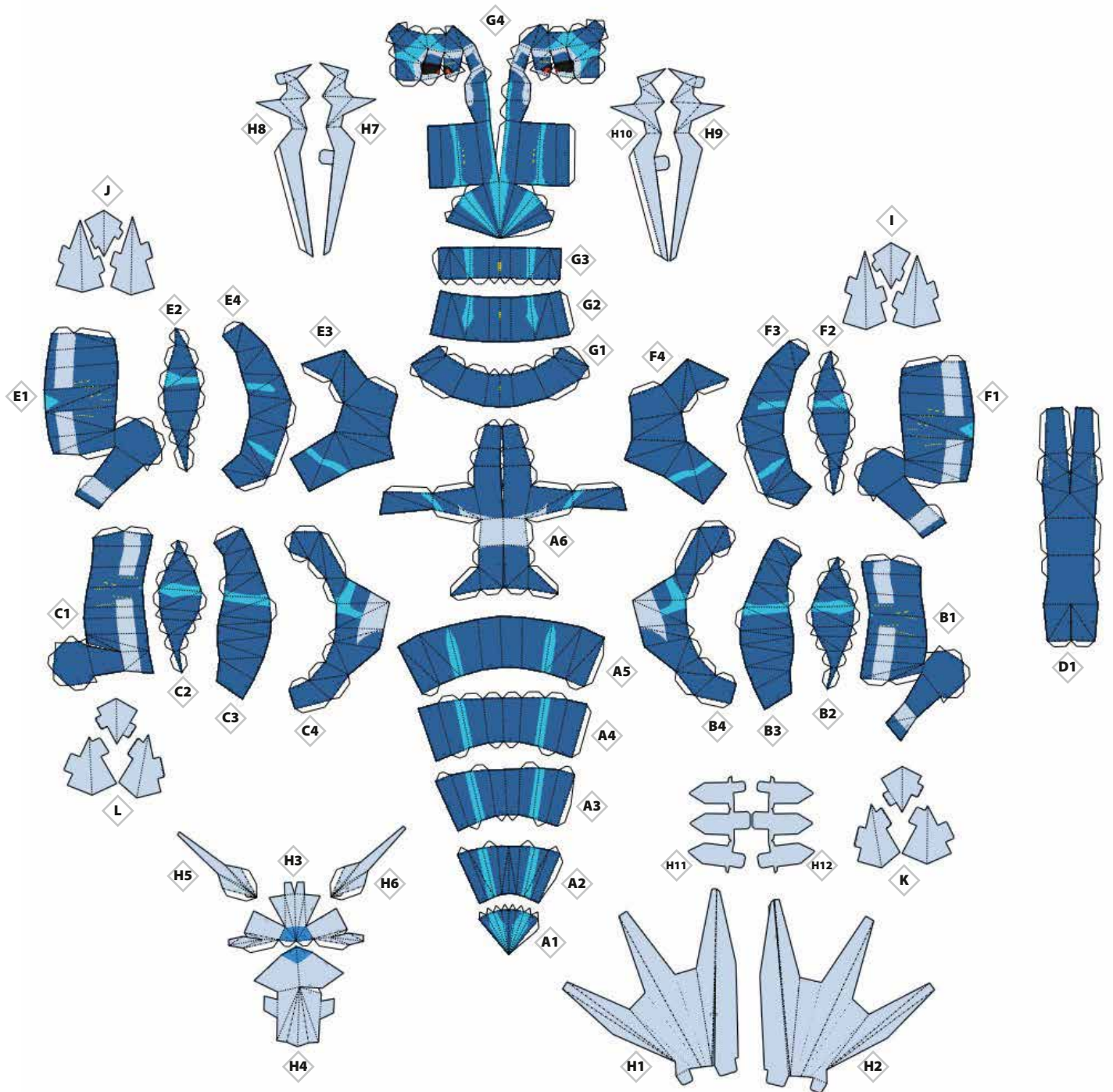
Una superficie despejada y lisa, como por ejemplo una alfombrilla de corte

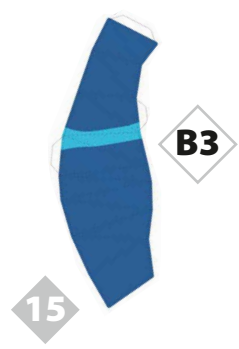
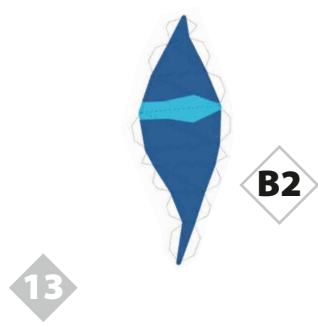
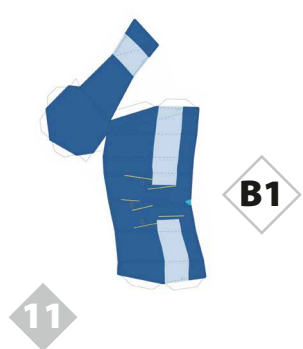
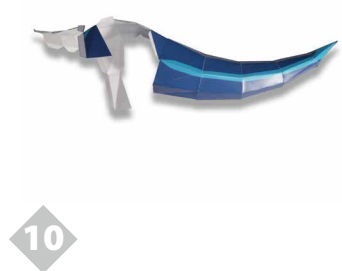
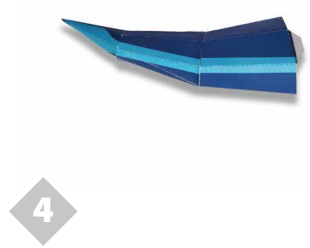
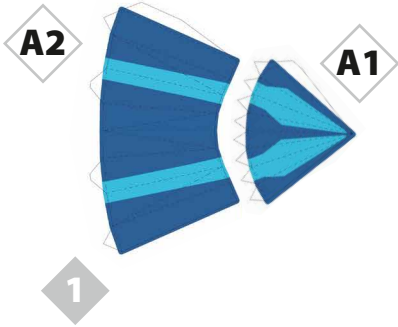
Recomendaciones para el papel

160 g/m² – 200 g/m²

Trabaja con cuidado, pero, sobre todo, ¡diviértete montando tu modelo de Dialga!









16



B4

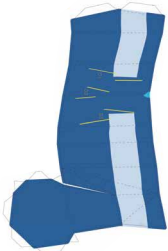
17



18



19



C1

20



21



C2

22



23



C3

24



25



C4

26



27



28



D1

29

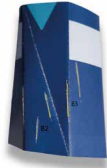


30



E1

31



32



E2

33



34



E3

35



36



E4

37



38



39



F1

40



41



F2

42



43



F3

44



45



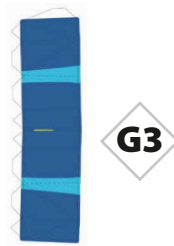
46



49



51



53



55



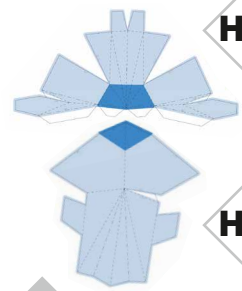
60



61



62



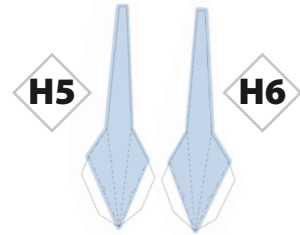
63



64



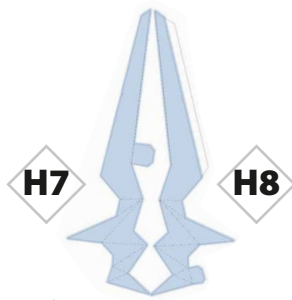
65



66



67



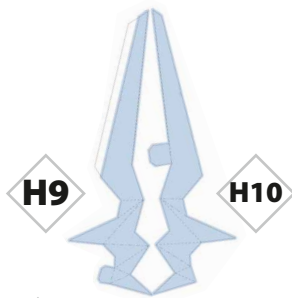
68



69



70



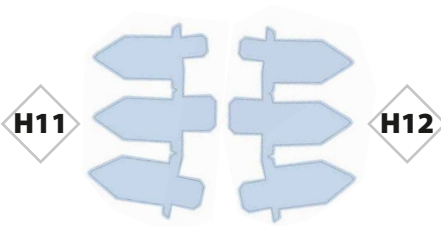
71



72



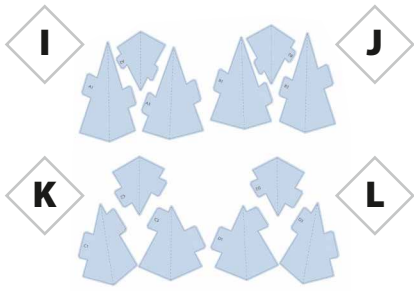
73



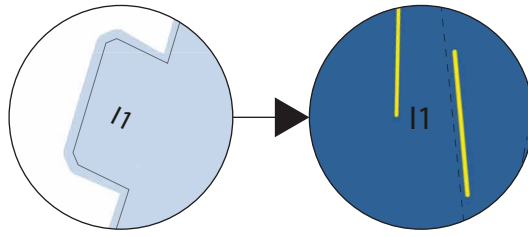
74



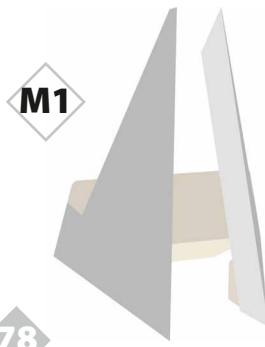
75



76



77



78

