



Bitte lies dir die folgende Anleitung gut durch, bevor du beginnst.

**Stelle sicher, dass die Skalierung deines Druckers auf 100% eingestellt ist.
Achte darauf, nur eine Seite des Papiers zu bedrucken.**

Warnung: Aufsicht durch Erwachsene wird empfohlen!


Du brauchst:


Schneiden: Schere oder scharfes Bastelmesser
Kleben: Starker Allzweckkleber oder schnell haftender Bastelkleber
Eine saubere Schneidfläche, z. B. eine Schneidematte
Papier-Empfehlungen
160gsm – 200gsm

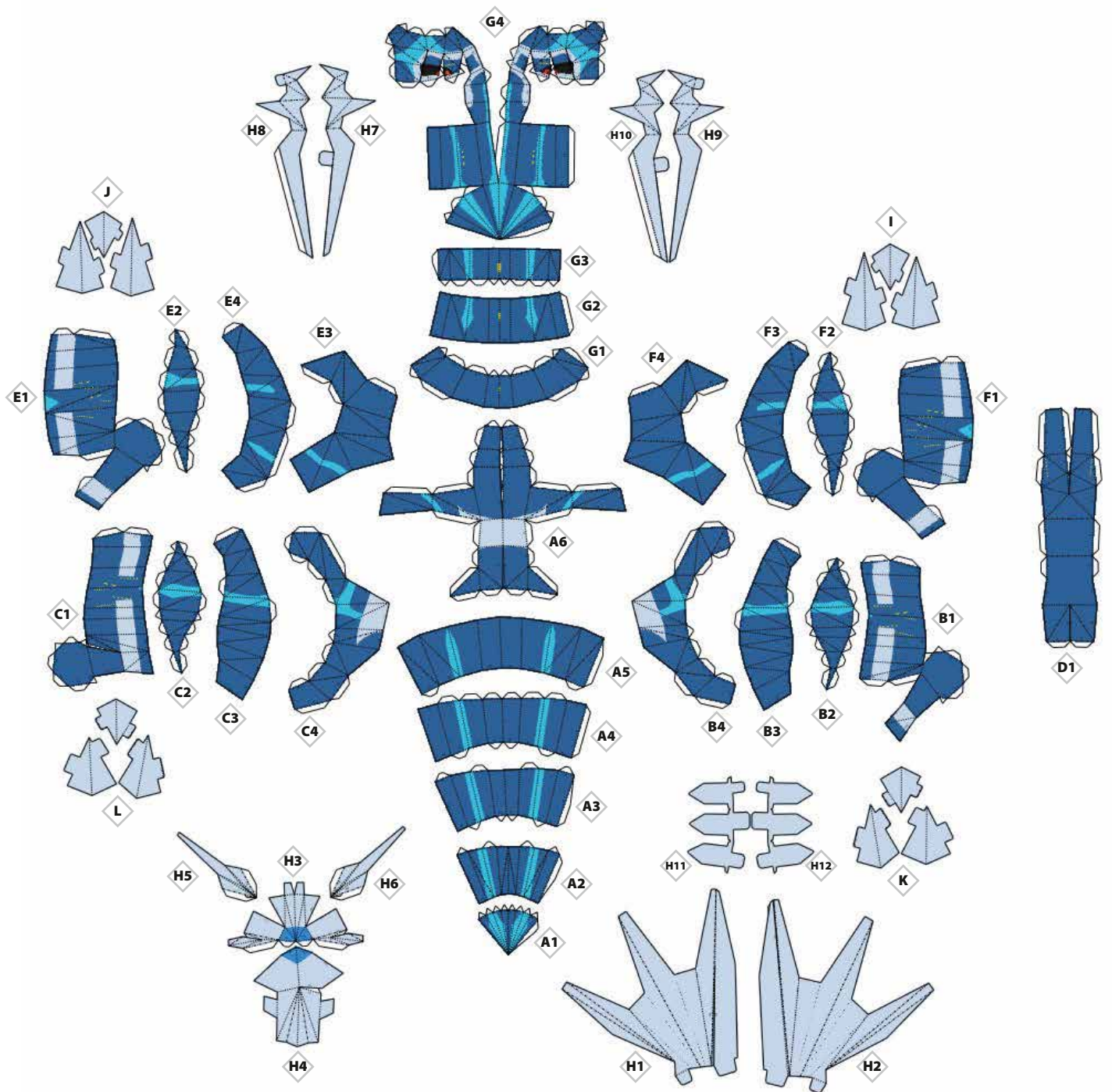
Bitte sei vorsichtig beim Anfertigen deines Bastelmodells von Dialga. **Viel Spaß!**

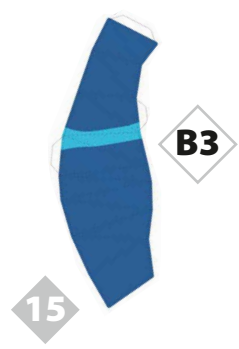
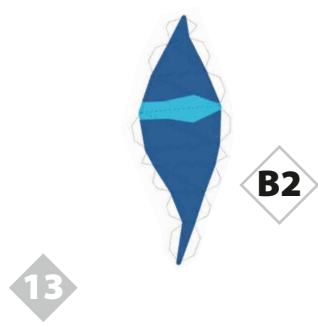
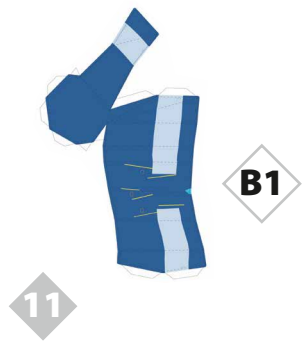
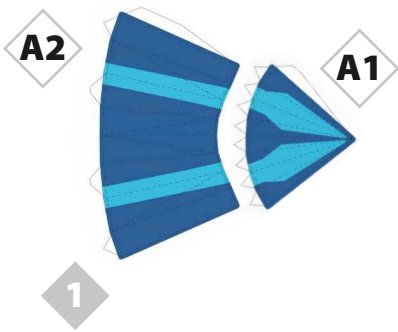
 Einschnittlinie

 Schnittlinie

 - - - - Innenfalte

 - - - - Außenfalte







16



B4

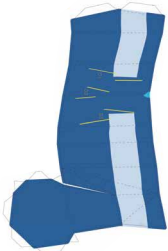
17



18



19



C1

20



21



C2

22



23



C3

24



25



C4

26



27



28



D1

29

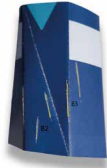


30



E1

31



32



E2

33



34



E3

35



36



E4

37



38



39



F1

40



41



F2

42



43



F3

44



45



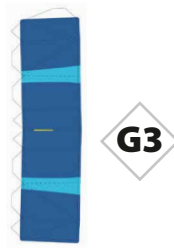
46



49



51



53



55



57



58



59



60

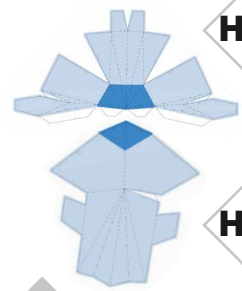




61



62



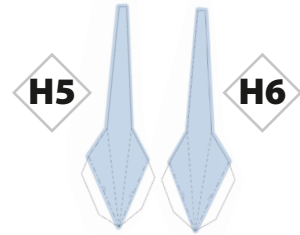
63



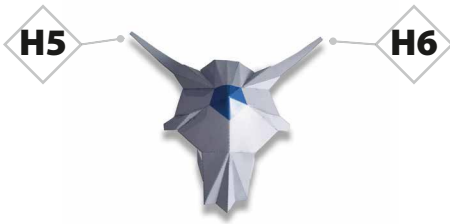
64



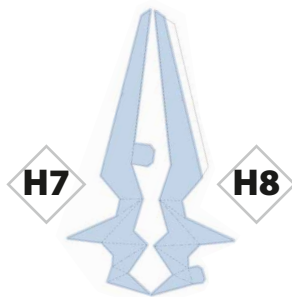
65



66



67



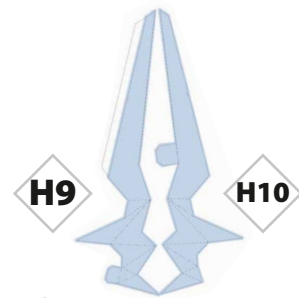
68



69



70



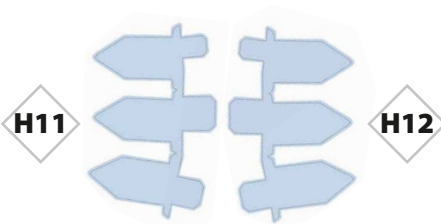
71



72



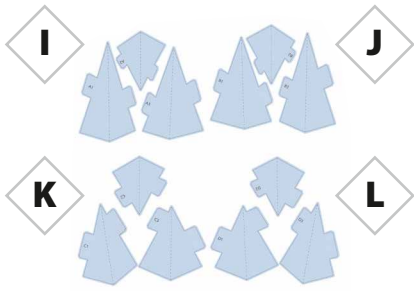
73



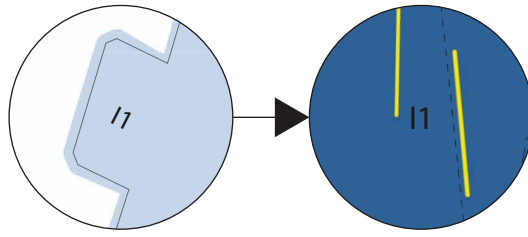
74



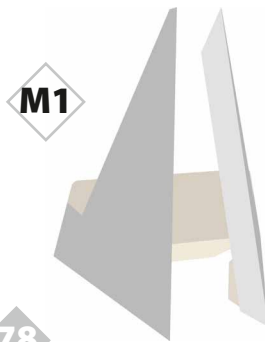
75



76



77



78

